

CONTRACT RIDER: JIGU! THUNDER DRUMS OF CHINA Revised May 2009

Jigu! Thunder Drums of China is produced by
IAI Presentations, Inc.

www.iaipresentations.com

Phone: (805) 474-8422

FAX: (805) 474-8425

Theatre Tour Direction by SRO Artists, Inc.

www.sroartists.com | gigs@sroartists.com

Phone: (608) 664-8160

FAX: (608) 664-8161

TECHNICAL RIDER: JIGU! THUNDER DRUMS OF CHINA

This technical rider, dated May 2009, supersedes all other riders.

THE FOLLOWING RIDER IS AN INTEGRAL PART OF THIS CONTRACT. PLEASE READ IT CAREFULLY. IF YOU HAVE ANY QUESTIONS OR PROBLEMS WITH PROVIDING ANYTHING IN THE RIDER, PLEASE CALL THE PRODUCTION OFFICE IMMEDIATELY.

THE COMPANY

The performers in **JIGU! THUNDER DRUMS OF CHINA** are from The People's Republic of China. While on tour, their tradition is to do everything together and the troupe lives as a family unit. If there is a social function, they should all be invited; it is considered impolite to single out certain members for special treatment. It is extremely important that all communication with the group or an individual regarding social or business arrangements be conducted through the Production Office at IAI Presentations, Inc. (*Contact information above and on Page 13, Item P of this document*). Please give them all the information in writing so they can have it translated and communicated accurately to the members of the troupe and the Technical Director.

The Chinese group leaders may deem it necessary to change the order of the acts from performance to performance and even, although rarely, while the performance is in progress. Please understand that these are consummate professionals, with many years of experience, who will always give their best effort regardless of the circumstances. If a number must be changed, some refocusing of specials may be required, possibly at the last moment. Please advise your technical staff that should changes have to be implemented they are made in the best interests of the show, the performers and for the audience's enhanced enjoyment of the show, and are in no way arbitrary. Our Technical Director will arrive with the Company and crew to begin setting up the necessary stage mounting, focusing of lighting instruments, and sound checks. They will also decide on the best position for each musical instrument. Please note that the final determination as to where certain of our instruments will be placed on the stage rests with the performers.

A. STAGE DIMENSIONS

JIGU! THUNDER DRUMS OF CHINA requires a stage with a proscenium opening of approximately forty-five feet wide and thirty-eight feet deep (*from proscenium to back curtain, or cyclorama*) and a proscenium height of twenty feet. The floor should be even, smooth, and free of any obstructions which might be hazardous to the performers. **The stage floor must be swept and damp mopped BY THE LOCAL CREW prior to each performance and at the intermission.**



CONTRACT RIDER: JIGU! THUNDER DRUMS OF CHINA Revised May 2009

B. CREW CALL

Please Note: All lighting instruments are required to be hung, circuited, colored, and focused before the company arrives. Providing all electrics and draperies have been properly hung, and other stage preparations as noted herein have been completed prior to the production's arrival, the load-in and set-up should take about four hours. Load-out requires one hour or less.

• Load-In and Load-Out

Minimum Crew Call:

- 1 – Lighting Technician
- 1 – Sound Technician
- 1 – Stage Hand
- 1 – Fly Rail Operator
- 2 – Follow Spot Operators

JIGU! THUNDER DRUMS OF CHINA do not require any wardrobe personal; however, any laundry rooms should be unlocked and available for use from the time of the company's arrival until they depart.

After all vehicles have been unloaded, the performers, the company's tech crew, and the theatre's tech crew will begin to hang the intelligent lights as well as set up the rigging. Upon completion, the performers will begin their warm-ups while the tech crews begin adjustment focuses. After adjustments are made, tech crews will begin setting up for sound and programming lights. Finally, the tech crews will do the necessary sound checks.

• Show Run

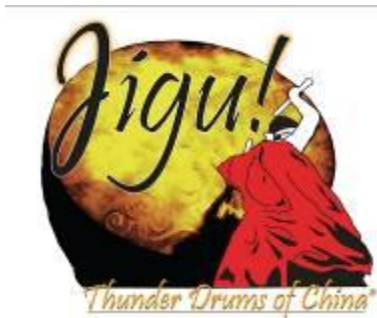
Minimum Crew Call:

- 1 – Lighting Technician
- 1 – Sound Technician
- 1 – Stage Hand (Positioned Back Stage)
- 1 – Fly Rail Operator
- 2 – Follow Spot Operators

(The above crew numbers may change due to local crew availability and union regulations.)

JIGU! THUNDER DRUMS OF CHINA has a very fast load-out; Often less than one hour. **Any and all *Jigu!* equipment will be struck from the stage and loaded into the truck before any house restore is begun.**

The Production will not accept responsibility for any damage to, any claim for, or any loss of anything backstage if no appropriate venue stagehands are on site for the load-in, run of show and load out.



CONTRACT RIDER: JIGU! THUNDER DRUMS OF CHINA Revised May 2009

C. LIGHTING

The **Jigu! 2009 Lighting Plot** (Supplied, See Page 14) can be described very simply:

- A four-color wash from FOH: Rx33, Rx26, Rx69, and Rx12.
- A four-color wash from "on-stage" pipe ends: Rx33, Rx26, Rx69, and Rx12.
- A three-color wash from "on-stage" electrics: Rx 26, Rx 69, and Rx 12.
- Please note the colors on the booms should be: Rx22, Rx58, & Rx395.

PLEASE NOTE THAT THESE COLORS ARE SUBJECT TO CHANGE!

Lastly, running lights are required in the upstage crossover, and on stage-left and stage-right wings.

Please Note: All lighting instruments are required to be hung, circuited, colored, and focused before the company arrives. Any adjustments to the lighting will be done upon arrival.

1. FLEXIBILITY

The production is not locked into the exact instruments listed on the plots. Rich, even washes with high coverage are essential to the show. For the simpler plots, substitutions of wider-angle units may be required and are acceptable. If the washes are rich and full, the company will be satisfied. Please contact the company's Technical Director about any changes the theatre needs to make to our light plot.

2. CONTROL

The company will use house control console.

It is important that the **Jigu! Channel Patch Sheet** (See Page 7) is accurate and ready upon arrival because there is usually minimal time for troubleshooting during load-in.

3. FOCUS

• **Front of House**

The FOH lighting is simply a straight on four-color wash divided into down-stage and up-stage focuses (See Diagram, Top of Next Page). The long rectangle on this diagram indicates the approximate location of the first drum-line on the stage.

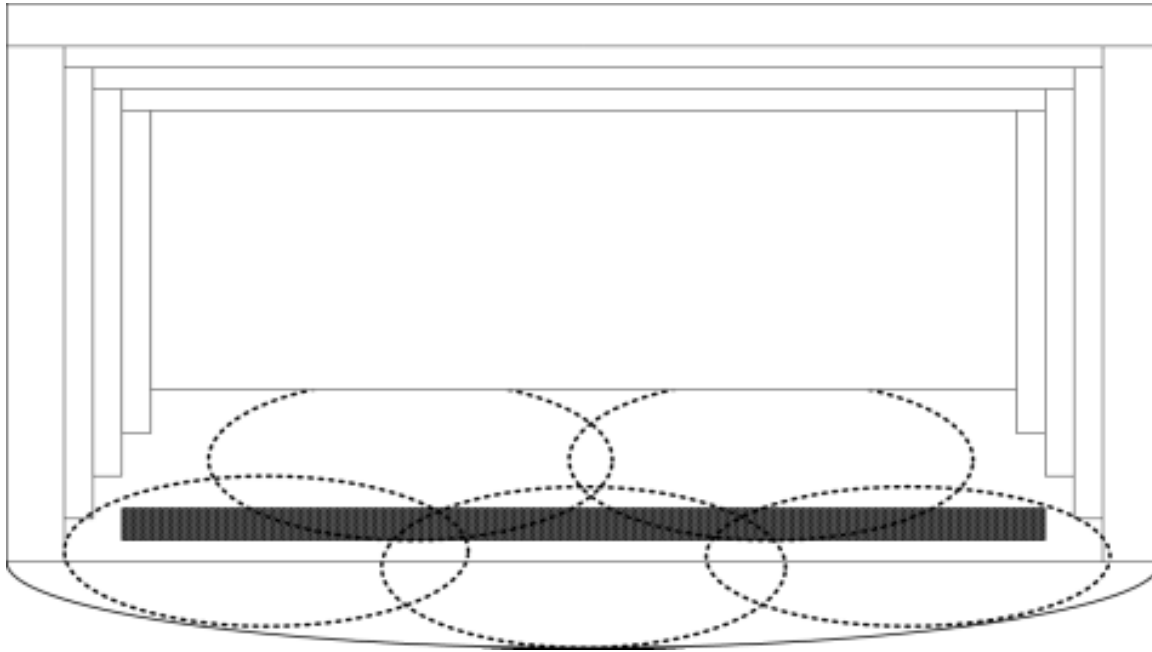
Odd groups: From the down-stage edge of the stage to mid-stage.

Even groups: Overlap the downstage wash and cut up-stage to the base of the cyclorama (or, off teaser).

Please Note: The two (2) specials indicated on our light plot, down stage left and down stage right on the FOH light bar, gelled in Rx17, are for set pieces which may or may not travel with the Company for this Production. The Production Office or our Technical Director will advise on the requirement of these two particular instruments during the show advance.

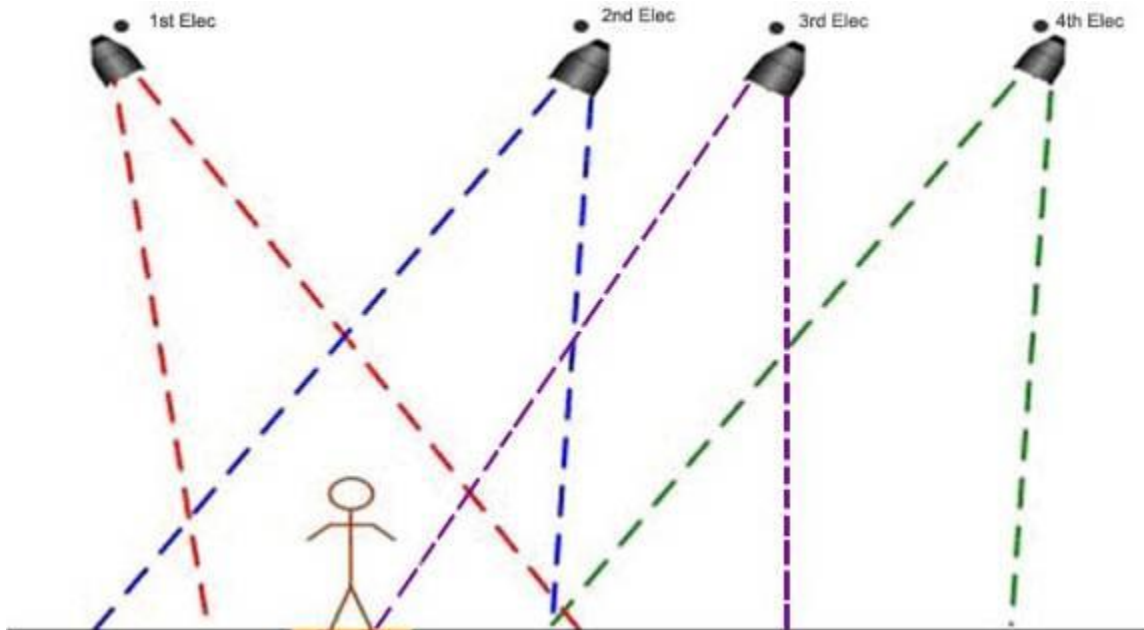


CONTRACT RIDER: JIGU! THUNDER DRUMS OF CHINA Revised May 2009



• 1st Electric

Par wash: The ceramic is set to a horizontal (*stage-right/stage-left*) wash as shown below.

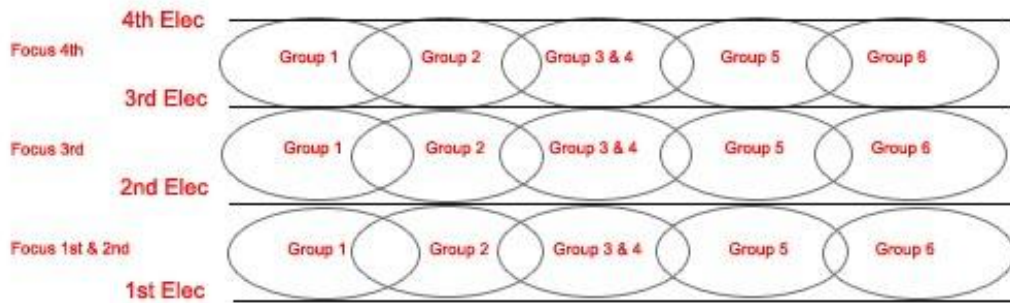




CONTRACT RIDER: JIGU! THUNDER DRUMS OF CHINA Revised May 2009

Pipe ends: The pipes ends focus directly under the electric and wash across the stage, starting at center and going off stage away from the instrument. They should be shuttered off the proscenium, vertically, and be open up-stage as shown in both figures below.

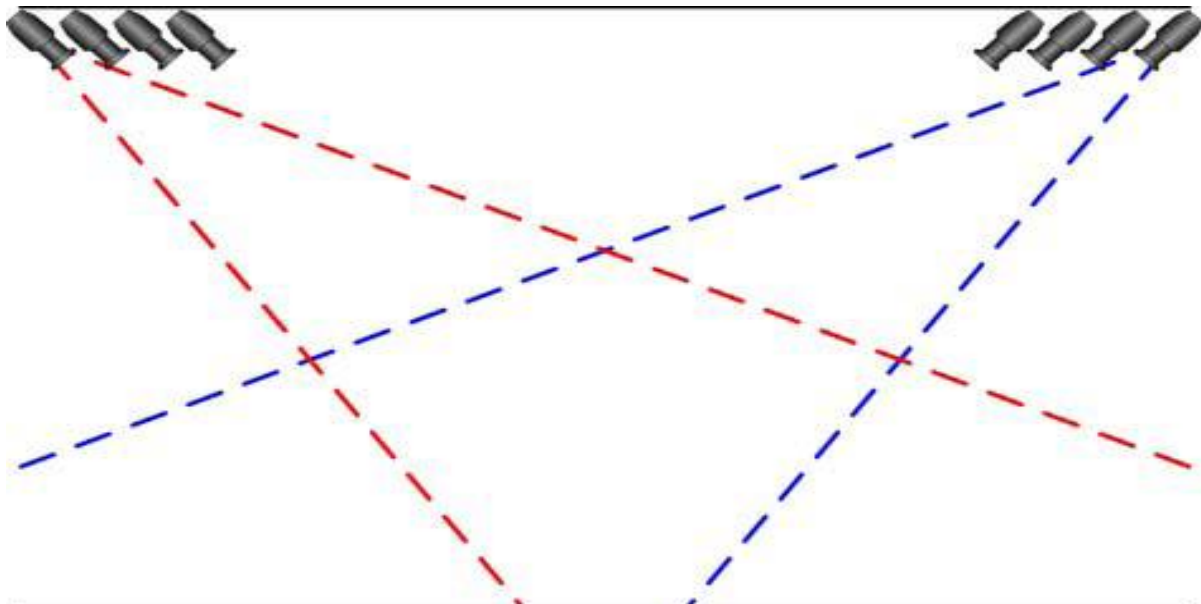
Full Plot Stage Wash

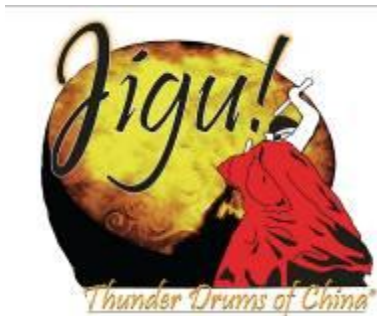


• 2nd Electric

Par wash: The ceramic is set to a horizontal (*stage-right/stage-left*) wash. These pars/fresnels are also focused so that the hot spot of the beam is on the first drum line. (See figures on page 4 and, this page).

Pipe ends: These pipe ends also focus directly under the electric, wash across the stage starting at center, and should have the shutters open unless they wash past the proscenium, vertically, or onto the cyclorama (See figure below).





CONTRACT RIDER: JIGU! THUNDER DRUMS OF CHINA Revised May 2009

• 3rd Electric

Par wash: The ceramic is set to a horizontal (*stage-right/stage-left*) wash. The pars/fresnels are focused so that the hot spot of the beam is between the 2nd and 3rd Electrics, but NOT on to the cyclorama (See figures on pages 4 and 5).

Pipe ends: These pipe ends also focus directly under the electric and wash across the stage starting at center, and should be shuttered off the cyclorama, vertically (See both figures, page 5).

• 4th Electric

Par wash: As with the 3rd Electric, the ceramic here is also set to a horizontal (*stage-right/stage-left*) wash. The pars/fresnels are focused so that the beam is between the 3rd and 4th electrics, but NOT on to the cyclorama (See first diagram on page 5).

Pipe ends: These pipe ends also focus directly under the electric and wash across the stage starting at center, and should be shuttered off the cyclorama, vertically (See second figure, page 5).

• Cyclorama

The cyclorama lights are shown on our lighting plot. We understand that each venue usually has their own cyclorama lighting. Cyclorama colors are **primary red, blue, and green**. If your cyclorama is lit with additional colors, we will make use of them. **A rich full cyclorama is very important to the show and an additional ground row is strongly recommended to create this effect.**

• Follow Spots

While we can do the show with only one follow spot, two follow spots are optimum for the very best staging effect. One or two strong follow spots of equal wattage and working color boomerangs are required. Please make sure they have a flat field, as bright as possible, and are set to a **soft edge**. Follow spot color used during the Presentation is **Rx 132** (*diffusion or frost*).

4. PATCHING

The following table (See Page 7) shows the channels that the company will use to build the cues for the show. Please program the venue's console with these channels IN ADVANCE OF THE COMPANY'S ARRIVAL to facilitate focus and allow for a smooth and efficient cue-to-cue technical run through during load-in.

5. CIRCUITING

How you "two-fer" the circuiting is entirely up to the venue, as long as the company has the Channel Patch configuration control channels in place per the Patch Sheet on Page 7.

6. BOOMS

The booms are shown on the light plot and are desired for the best possible lighting of the Production. This aspect of our lighting package will be advanced by our Technical Director, together with your lighting technicians. If your facility does not have its own booms in your inventory, PLEASE CHECK WITH THE PRODUCTION OFFICE OR OUR TECHNICAL DIRECTOR BEFORE ORDERING THE BOOMS.



CONTRACT RIDER: JIGU! THUNDER DRUMS OF CHINA Revised May 2009

Jigu! Channel Patch/Electric Color Focus

Channel	Electric	Color	Focus
Channel 01:	Front of House	Rx33.....	Down Stage Wash
Channel 02:	Front of House	Rx33.....	Up Stage Wash
Channel 03:	Front of House	Rx26.....	Down Stage Wash
Channel 04:	Front of House	Rx26.....	Up Stage Wash
Channel 05:	Front of House	Rx69.....	Down Stage Wash
Channel 06:	Front of House	Rx69.....	Up Stage Wash
Channel 07:	Front of House	Rx12.....	Down Stage Wash
Channel 08:	Front of House	Rx12.....	Up Stage Wash
Channel 09:	Pipe Ends	Rx33.....	All 4 Electrics
Channel 10:	Pipe Ends	Rx26.....	All 4 Electrics
Channel 11:	Pipe Ends	Rx69.....	All 4 Electrics
Channel 12:	Pipe Ends	Rx12.....	All 4 Electrics
Channel 13:	1 st Electric	Rx26.....	Par/Fresnel Wash
Channel 14:	1 st Electric	Rx69.....	Par Fresnel Wash
Channel 15:	1 st Electric	Rx12.....	Par/Fresnel Wash
Channel 16:	2 nd Electric	Rx26.....	Par/Fresnel Wash
Channel 17:	2 nd Electric	Rx69.....	Par/Fresnel Wash
Channel 18:	2 nd Electric	Rx12.....	Par/Fresnel Wash
Channel 19:	3 rd & 4 th Electric	Rx26.....	Par/Fresnel Wash
Channel 20:	3 rd & 4 th Electric	Rx69.....	Par/Fresnel Wash
Channel 21:	3 rd & 4 th Electric	Rx12.....	Par/Fresnel Wash
Channel 22:	Booms (See Page 6, Item 7)	Rx22.....	Per Advance
Channel 23:	Booms (See Page 6, Item 7)	Rx58.....	Per Advance
Channel 24:	Booms (See Page 6, Item 7)	Rx395.....	Per Advance
Channel 25:	Cyc Lights /Ground Row	Red.....	Cyclorama
Channel 26:	Cyc Lights /Ground Row	Blue.....	Cyclorama
Channel 27:	Cyc Lights /Ground Row	Green.....	Cyclorama
Channel 28:	House Lights		
Channel 29:	House Curtain		
Channel 32:	Specials	Rx 17.....	FOH

(For set pieces, to be advanced.)



CONTRACT RIDER: JIGU! THUNDER DRUMS OF CHINA Revised May 2009

• **Electrics:**

Pipes should be trimmed as close to 18' as possible.

• **Borders:**

Borders need to be down-stage and as close to each electric as possible. The trims should be set to just barely hide the lighting pipes.

• **Legs:**

Furthest downstage legs should be tied approximately 20' from center. Subsequent legs should be tied further onstage in 18" increments, or as needed for sight lines. Leg pipes need to be trimmed to at least 20'. Legs will need to be extended down from the pipe if shorter than 20'. In smaller theatres, check with the Production Office or our Technical Director to adjust trim height.

• **Soft Goods:**

There will be at least 2 sets of soft backdrops hung in your theatre for the Production. The actual number will be advised by the production office or Technical Director as necessary. These drops will need to be flown in and out at certain times during the show or, if this is not possible due to limited or no fly space, concealed with travelers, if possible. Please discuss your particular situation with the Production Office or our Technical Director.

• **Travelers:**

An upstage black traveler between the cyclorama and the cyclorama lights/ground row is ideal for this show. The best look is a full black traveler, but a bounce drop or a black scrim may also be used. A mid-stage traveler should also be provided, just upstage of our 2nd Electric, if available.

D. SUPPLIES AND MISCELLANEOUS ITEMS

For **EACH** PERFORMANCE, the presenter must provide, at their cost, the following items, and consumables:

- One (1) fresh roll of black Gaffer's tape for spiking musical instruments or repairs.
- One (1) pint of Rosco Diffusion Fog Fluid (*bright green in color*). **If you have a house fogger and we may use it, then please provide one pint of fog fluid regularly used in your fogger.**
- One (1) 6' – 8' foot ladder, close at hand, for lighting and other stage adjustments.
- One (1) wet mop and bucket with quick access to water for last minute mopping of stage.
- One (1) dry mop. **PLEASE NOTE THAT YOUR STAGE MUST BE SWEEPED AND DAMP MOPPED BY LOCAL CREW BEFORE EACH PERFORMANCE AND AT INTERMISSION, WHERE PRACTICAL!**
- 25 clean, hand-sized towels, divided (some for the men and some for the women in the Group) and placed in the dressing rooms prior to the Group's arrival. These are for the performer's personal use.
- Four (4) BATH SIZE towels or rags, for use in mopping up moisture off the stage as necessary.
- Two (2) 6' - 8' Property Tables situated safely near the stage entrances and exits, upstage left and upstage right, as is practical in your venue.



CONTRACT RIDER: JIGU! THUNDER DRUMS OF CHINA Revised May 2009

E. AUDIO

This production does not carry amplifiers or speakers. It is the responsibility of the presenter to ensure that the theater's sound is of sufficient quality to allow the audience to hear and appreciate the show. Please note that the overhead and floor microphones will be used only if your house seats over 2,500 patrons. The Lavalier and Presenter Microphones will be used at every performance.

- 1 Wireless Lavalier Microphone
- 6 Overhead Microphones
- 1 Wireless Presenter's Microphone
- 1 Dual-Deck CD Player, hooked into house sound
- 4 PCM Floor Microphones
- Headset Communication for at least 7 crew members

Headset communications will be required between the following personnel:

- Our Technical Director
- Fly Rail Operator
- Stage Hand (Located Backstage)
- Light Board Operator
- Sound Board Operator
- Follow Spot Operators

The performance cannot be done without this communication system!

F. SPECIAL EFFECTS

• Smoke

Jigu! travels with one fogger and/or one hazer. Please make any necessary permitting and safety arrangements accordingly (*e.g. resetting fire alarms, contacting your fire marshal, etc.*). Each venue is required to supply one pint of high quality fog fluid per performance (*See Page 8, Item D*). The company prefers Rosco Diffusion Fog Fluid. This long lasting fluid can be easily identified by its bright green color, as opposed to the clear fluid that dissipates more quickly. Please note that the Special Effects requirements for the production are subject to change and will be advanced by the Technical Director or Production Office. **Where possible, we would welcome and appreciate the use of your house fogger. Please notify the Production Office or our Technical Director if your house fogger is available to the Company for their use and be sure that one pint of your regular fog fluid is provided.**

G. DRESSING ROOMS

Two large chorus-type dressing rooms are required to accommodate NO LESS than 14 people per room. One star dressing room, with a telephone and access to outside lines, for our technical director to use as a production office, will also be required. These rooms MUST be adequately lighted and, properly heated or cooled. They should be near hot and cold running water and have easy access to toilet facilities. Dressing rooms should be cleaned prior to the performers' arrival. No one except production personnel should be allowed in these dressing rooms during the production's stay. Please see Page 12 Item N, for more information on our Closed Load-In, Load-Out and Backstage Security Policies.



CONTRACT RIDER: JIGU! THUNDER DRUMS OF CHINA Revised May 2009

H. PERFORMER AND CREW SERVICES

This agreement requires the presenter to provide hospitality for the approximately 25 members of **JIGU! THUNDER DRUMS OF CHINA** during their load-in and the performance(s). In addition, a hot meal is required if the company is performing more than one show in one day. Please note that in some cases load-in will take place the day prior to the performance(s), in which case, some form of hospitality will be required for both days.

Basic Hospitality items should be pre-set in time for the production's arrival and items should remain left out for the company during their residence at your theatre. Not everyone will enjoy their food all at once, but they will eat when they have time throughout their stay at the theatre. If local regulations require the changing out of certain fresh food items, please REPLACE those items as necessary. The company MUST be provided with sufficient food and beverages for the duration of their time at your venue and we appreciate your hospitality! PLEASE SEE THE FOLLOWING PAGE FOR MEAL REQUIREMENTS AND GUIDELINES.

• Morning Load-In Provisions

(To be provided for all morning load-ins, arrivals and performances, prior to Noon):

Large Pot of Coffee (*enough for 10 people*)

Large Pot of Hot Water (*enough for 50 drinks*)

Large package of Lipton Tea Bags (*in assorted flavors, enough for 50 drinks*)

Cream, Real Sugar, Cups, Stirrers, and Spoons (*enough for 50 drinks*)

Assortment of Gatorade and/or Powerade drinks (*30 individual sized bottles*)

Assortment of Coke Classic, Diet Coke, or other sodas (*30 cans*)

Assortment of Fruit Juices (*orange, apple, cranberry, etc.*) (*30 cans*)

Bottled Water (*3 Bottles per person – 75 bottles*)

Whole Milk (*2 Gallons*)

Bagels and Cream Cheese (*total 20 pieces; Bagels cut in half, please!*)

Doughnuts (*total 15 pieces*)

Fruit (*apples, oranges, bananas, etc.*) (*30 pieces*)

Cookies (*3 per person – total 75 pieces*)

Assortment of Chips (*Individual combination packs, enough for about 25 people, or 3 large bags.*)

- **Afternoon and Evening Provisions: (To be provided for all afternoon arrivals and load-ins, AND for all afternoon or evening performances. These items should also be provided IN ADDITION to the Morning Provisions above IF the performers arrive at or before Noon, and NO MEAL is being provided. Please contact the Production Office to set the serving time for the afternoon items.)**

Large Pot of Coffee (*enough for 10 people*)

Large Pot of Hot Water (*enough for 50 drinks*)

Large package of Lipton Tea Bags (*in assorted flavors, enough for 50 drinks*)

Cream, Real Sugar, Cups, Stirrers, and Spoons (*enough for 50 drinks*)

Assortment of Gatorade and/or Powerade drinks (*30 individual sized bottles*)

Assortment of Coke Classic, Diet Coke, or other sodas (*30 cans*)

Assortment of Fruit Juices (*orange, apple, cranberry, etc.*) (*30 cans*)

Bottled Water (*3 Bottles per person – 75 bottles*)

Whole Milk (*2 Gallons*)

Deli Trays with Meats, Cheeses, and Vegetables (*5 Trays, or, enough for two sandwiches per person.*)

Bread (*Enough for two sandwiches per person*)

Crackers (*1 Box per Deli Tray – 5 Boxes*)

Fruit (*apples, oranges, bananas, etc.*) (*30 pieces*)

Cookies (*3 per person – total 75 pieces*)

Assortment of Chips (*Individual combination packs, enough for about 25 people, or 3 large bags.*)



CONTRACT RIDER: JIGU! THUNDER DRUMS OF CHINA Revised May 2009

H. PERFORMER AND CREW SERVICES (Continued)

- **Hot Chinese Meal: (For venues with more than one show on one day, meals are required. All meal times must be pre-arranged with the Production Office. Meals are greatly appreciated and so, if you have only one show and wish to provide a meal for the Group, we welcome you to do so. Follows the SUGGESTED MENU for all meals. Please note that the meal may also consist of regional dishes or additional items, and the performers welcome variety in the food you provide. Please contact the Production Office with any questions about your meal service and THANK YOU!)**

Please provide enough plates, napkins, forks, spoons, knives, and chop sticks for 25 people:

General Tsao's Chicken
Pork Chow Mein
Steamed White Rice OR
Whole Wheat Noodles

Beef with Broccoli
Vegetable Stir Fry dish (*Vegetarian Dish*)
Appetizers (*pot stickers, egg rolls, etc.*)

A Chinese Buffet or Family Dinner Special is also acceptable. The Company requests that all meals must include at least one vegetarian dish and appreciate any meals offered by the Presenter. In all cases, please leave all hospitality items out until all performers and crew have left your facility for the day. While the company may not consume all of the food immediately, they will eat in shifts throughout their time at the venue. Please keep this in mind and do not remove food or beverage items until the end of the day or unless otherwise asked to do so by company members or crew.

I. PARKING

After load-in, the production will require parking spaces for two (2) custom 15-passenger vans, a 24' box type truck, and a tow-behind trailer, at or as near as possible to the theatre loading door. A good rule of thumb is to insure that there are a total of FOUR LARGER PARKING SPACES available near your loading dock/backstage entrance for our vehicle inventory. If there is insufficient space at the theatre, presenters are required to make other arrangements. If a commercial parking lot is used, please advise the parking lot personnel, in advance, of the arrival and departure times of the company. Payment of any parking fees is the expense of the presenter and must be taken care of prior to the group's arrival. If the presenter is providing hotel accommodations for the group, then the presenter is also responsible for any hotel parking fees. Under no circumstances will the production pay for the parking either at the venue or at a hotel. Please note that our vehicle inventory is subject to change. The production office will notify the type of vehicles the company will travel in, as well as the number and type of parking spaces required, during the show advance.

J. MERCHANDISE

JIGU! THUNDER DRUMS OF CHINA may elect to sell merchandise at each performance. The production office will notify the presenter during show advance of production's intent to sell merchandise, their requirements for sales, and what merchandise items will be sold. Please be sure to arrange IN ADVANCE OF THE COMPANY'S ARRIVAL one 6' – 8' table, draped in a white, red or black cloth in a prominent place in your lobby for the sale of merchandise. We would also appreciate the house providing a pipe and drape display area behind the table, if available, and two chairs behind the table are requested for our sellers. If the presenter does not indicate the amount of commission required, then it is agreed that no commission whatsoever will be payable to either the presenter or the theatre.



CONTRACT RIDER: JIGU! THUNDER DRUMS OF CHINA Revised May 2009

K. COMPLIMENTARY TICKETS

The sponsor shall hold twelve (12) complimentary tickets to each performance for use by either the producers or the agents of **JIGU! THUNDER DRUMS OF CHINA**. Tickets not requested and set aside for the producer or agent within 24 hours of the performances may be sold.

L. SELLING THE PIT

JIGU! is staged to play only down to the plaster line. If you have a pit downstage of the main curtain, it should be seated and sold as prime seats. This will not only add income to the venue, but it will also set the acts closer to the audience and provide a more intimate and exciting performance.

M. EMERGENCY INFORMATION

The presenter should post at the stage manager's desk the telephone numbers of the police, fire department, and any other emergency service provided for your theatre's area. Additionally, it is helpful if the presenter will provide the names, addresses, and telephone numbers of a recommended dentist, doctor and a twenty-four hour hospital and/or clinic, which the company may use while in residence.

N. MEDIA INTERVIEWS AND CONTACTS/CLOSED LOAD-IN AND BACKSTAGE

IAI Presentations, Inc. and **JIGU! THUNDER DRUMS OF CHINA** endeavor to create the most memorable and exciting theatrical experience possible at each venue. Because of the technical nature of the show, the company's crew and artists are very busy setting up and preparing for the performance(s) from the time they arrive at the venue until curtain time. **Therefore, IAI Presentations, Inc. requests that the load-ins be closed to the General Public and all Media, and that no photographs or video-taping of the load-in or the artists be requested or permitted during the load-in, performance or during load-out. Further, no Media is to be allowed backstage during load-in, load-out or during the performance, without the express, advance permission of the Production Office or the Technical Director traveling with the Production. "Surprise" or last-minute interviews will not be permitted. It is the responsibility of the presenter and their staff to see that ALL backstage areas, including dressing rooms and green rooms, are secured at all times while the Company is at the venue.**

When time allows, artist Media interviews may be granted by the production office, but any such interviews or Media presence must be pre-approved by the Production Office. Presenters requesting any such on-site interviews must first obtain approval by contacting the Production Office and allow 24 hours notice for final approval of same. **This also applies to TV news taping, archival tapings, and photographs of our performance.**

NO MEDIA WILL BE GIVEN INTERVIEWS OR ACCESS TO THE ARTISTS WITHOUT PRE - APPROVAL FROM THE PRODUCTION OFFICE. ALL TRANSLATIONS MUST BE MADE THROUGH IAI PRESENTATION'S AUTHORIZED TRANSLATOR, TRAVELING WITH THE COMPANY!

For advance clearance on all Media interviews, please contact IAI Presentations at (805) 474-8422. The production office is happy to work with each venue on advance stories on **JIGU! THUNDER DRUMS OF CHINA**. Advance press interviews are organized through the IAI Presentations' Production Office. Again, a minimum of 24 hours advance notice to the Production Office is required for all interviews and Media Contact. Full contact information can be found on Page 13, Item P of this document.

NO FLASH PHOTOGRAPHY IS PERMITTED AT ANY TIME, AS IT IS DANGEROUS TO THE PERFORMERS AND DISTRACTING TO THE AUDIENCE!



CONTRACT RIDER: JIGU! THUNDER DRUMS OF CHINA Revised May 2009

O. FEDERAL, STATE, AND CITY TAXES

Presenter shall pay and hold harmless the artists, agents and production company from any Federal, State or City taxes, fees, dues and the like relating to the engagement herein and the sums stated herein and payable to the artists, agent or production company shall be free of such taxes, dues, and the like. This provision may not be amended, deleted, or cancelled without written agreement by the production company.

Withholding Tax Under Revenue Code Section 1441

The artists are performing under the aegis of a U.S. corporation, International Asia, Inc. and are treated by International Asia, Inc. as employees for U.S. tax purposes. International Asia, Inc. is unrelated to the performers being neither owned, nor controlled by the performers. Under these circumstances, there is no need for any U.S. person making payments to, or for the benefit of, International Asia, Inc. to withhold U.S. income taxes under I.R.C.â 1441 other than to ask for and receive a W-9 from this corporation. W-9's are also required when payments are made to either SRO Artists, Inc or IAI Presentations, Inc. If you have any questions please contact Cecile.Glunt@irs.gov or Anthony.H.Kite@irs.gov, the Internal Revenue Service's CWA Program Specialists.

P. CONTACT INFORMATION

Your Technical Director may obtain additional information by calling the Production Office, IAI Presentations, Inc., in California. We are aware that no two theatres are alike, and we are here to assist you in keeping your technical costs to a minimum. **JIGU! THUNDER DRUMS OF CHINA** adapts to smaller stages and is extremely flexible. They are consummate professionals and can overcome virtually any technical problem, and still give an exciting and satisfying performance.

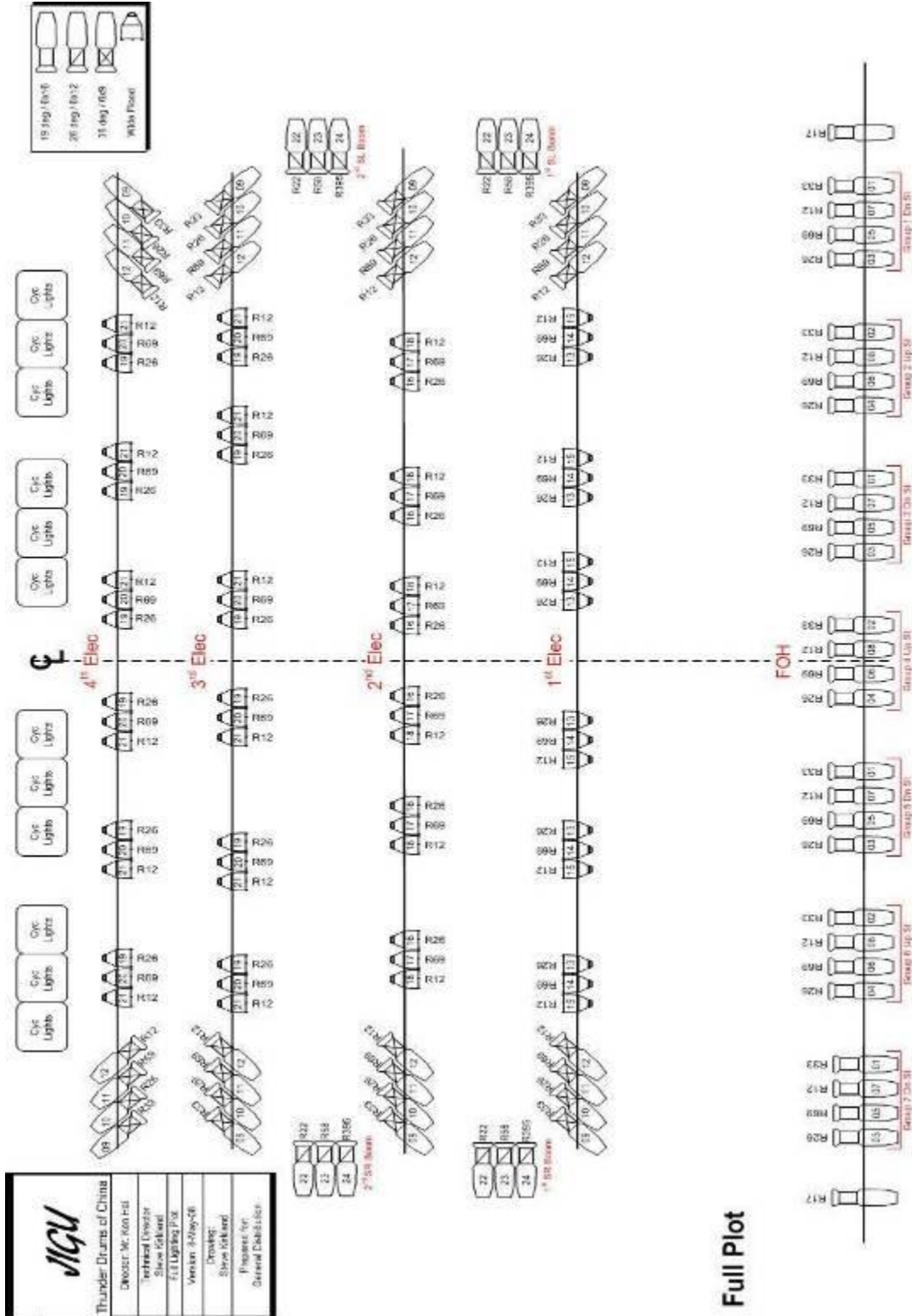
Our office will contact your Technical Director and Theatre Staff prior to your performance to set tentative arrival times, and review basic technical and administrative advance items. One to two weeks prior to the Company's arrival at your theatre, our Technical Director will contact your Technical Director to answer remaining questions, confirm arrival times, and review in more detail the technical aspects of the Production. If you have questions regarding the suitability of your playing space, or are unable to provide items listed in this rider, refer these questions to:

Production Office Contact Information

Mr. Don Hughes, President, Ext. 14, don@iaipresentations.com
Ms. Cynthia Dike-Hughes, Vice President, Ext.12, cynthia@iaipresentations.com
Ms. Melissa Hogan, Production Associate, Ext. 10, melissa@iaipresentations.com
Ms. Katie Bates, Production Associate, Ext. 20, katie@iaipresentations.com
IAI Presentations, Inc.
P. O. Box 4, Pismo Beach, CA 93448
Telephone: (805) 474-8422
Fax: (805) 474-8426



CONTRACT RIDER: JIGU! THUNDER DRUMS OF CHINA Revised May 2009



Full Plot